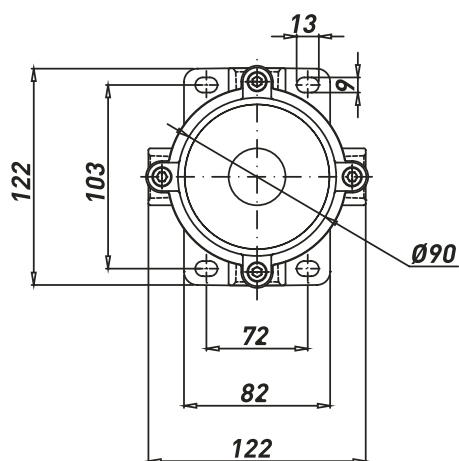
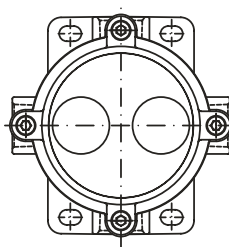


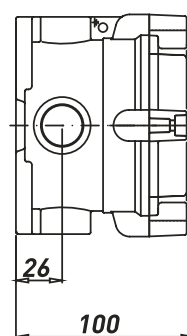
Dimensions CP../EFDCN



**CPC/CPT/CPX
EFDCN-1**



**CPC/CPT/CPX
EFDCN-2**

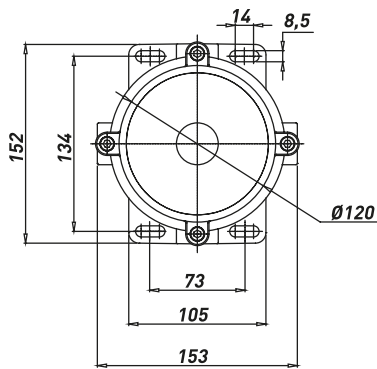


CP../EFDCN.. Series - Push button stations - Available versions

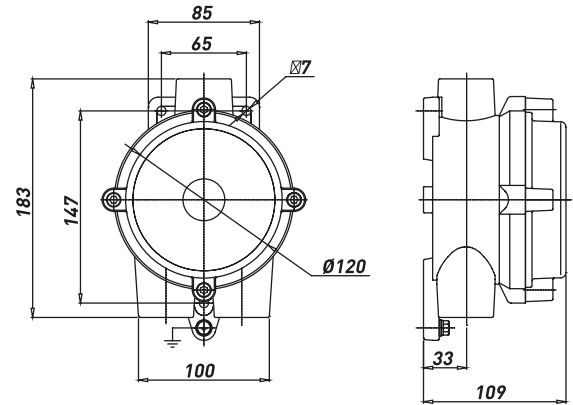
TYPE	AVAILABLE ENTRIES		CONFIGURATION OF ENTRIES	MAX. N° OF OPERATORS	ENCLOSURE DIAMETER [mm]
	METRIC	NPT			
CPC-26/EFDCN..	2 X M25	2 X 3/4"NPT		2	90
CPT-26/EFDCN..	3 X M25	3 X 3/4"NPT		2	90
CPX-26/EFDCN..	4 X M25	4 X 3/4"NPT		2	90

For complete push button stations, ask to the Sales Dept.

Dimensions CPS../EFDCN

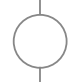





CPSC/CPST/CPSX



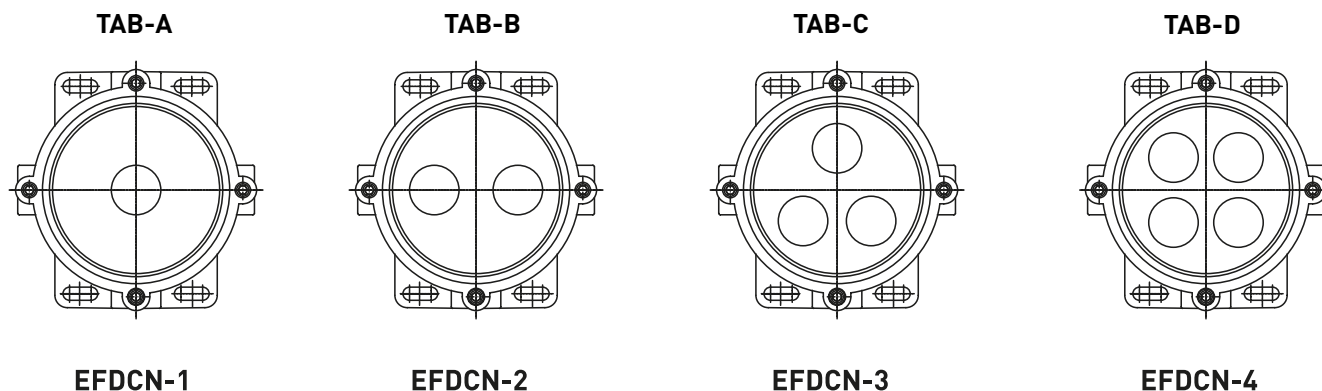
CPSG

CPS../EFDCN.. Series - Push button stations - Available versions


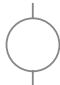
TYPE	AVAILABLE ENTRIES				CONFIGURATION OF ENTRIES	MAX. N° OF OPERATORS	ENCLOSURE DIAMETER [mm]
	METRIC		NPT				
CPSC-../EFDCN..	2 X M25	2 X M32	2 X 3/4"NPT	2 X 1" NPT		4	120
CPST-../EFDCN..	3 X M25	3 X M32	3 X 3/4"NPT	3 X 1" NPT		4	120
CPSG-../EFDCN..	3 X M25	3 X M32	3 X 3/4"NPT	3 X 1" NPT		4	120
CPSX-../EFDCN..	4 X M25	4 X M32	4 X 3/4"NPT	4 X 1" NPT		4	120

For complete push button stations, ask to the Sales Dept.

Dimensions CP../CPS.. EFDCN



CP../CPS.. EFDCN Series - Standard versions*

TYPE	CODE**	ENTRIES	N° OF HOLES ON COVER	DRAWING	ENCLOSURE DIAMETER [mm]	WEIGHT [Kg]
CPC-26/EFDCN-1-90	B012074010149	<div>2 X M25</div> 	1	TAB-A	90	1.10
CPC-26/EFDCN-2-90	B012074010134		2	TAB-B	90	1.10
CPSC-26/EFDCN-1-120	B012074010152		1	TAB-A	120	1.70
CPSC-26/EFDCN-2-120	B012074010154		2	TAB-B	120	1.70
CPSC-26/EFDCN-3-120	B012074010156		3	TAB-C	120	1.70
CPSC-26/EFDCN-4-120	B012074010158		4	TAB-D	120	1.70
CPC-26/EFDCN-1-90	B012074010150	<div>2 X 3/4"NPT</div> 	1	TAB-A	90	1.10
CPC-26/EFDCN-2-90	B012074010151		2	TAB-B	90	1.10
CPSC-26/EFDCN-1-120	B012074010153		1	TAB-A	120	1.70
CPSC-26/EFDCN-2-120	B012074010155		2	TAB-B	120	1.70
CPSC-26/EFDCN-3-120	B012074010157		3	TAB-C	120	1.70
CPSC-26/EFDCN-4-120	B012074010159		4	TAB-D	120	1.70

*CP../EFDCN Series are supplied ATEX/TR-CU certified. For IECEx certificate, ask to our Sales Dept.

*CP../EFDCN Series are supplied painted. Standard painting cycle: C4 - Colour: Blue RAL5014 (Other colours available upon request)

**Codes refer to drilled enclosures without operators & components. To be ordered separately, refer to "Spare & Accessories" section.

For different customized configurations, ask to our Sales. Dept.